

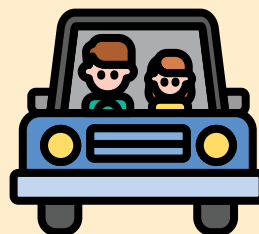
# Asymptomatic close contact protocols

## Very high caseload settings

**Students in school or early childcare, who have been identified as a close contact but are asymptomatic:**



Can attend school, before school care and after school care



Can travel between home and school with family – avoid public transport unless no alternative available



Can attend school-based sporting, cultural training or school events at their school



Must isolate at all other times until 7 days has passed.

**If students become unwell, they should stay at home and get tested.**

**These settings do not apply to students who are household close contacts – in this case, students will need to isolate for seven days and follow the regular close contact protocols.**